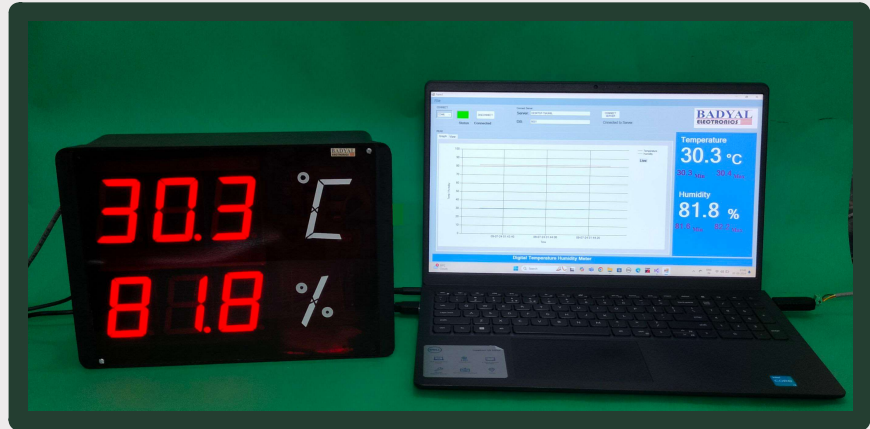


#### PRODUCT INFORMATION

**MODEL: DHT-001**

- > Compact Design
- > Easy to Install
- > Large Display
- > Alarm Facility
- > Software Provides



A temperature and humidity meter, often referred to as a hygrometer or a thermo-hygrometer, is a device used to measure both the temperature and the humidity level of the air. These instruments are useful for various applications.

#### PRODUCT SPECIFICATION

**Range:**

Temperature - 00.0°C to 99.9°C

Humidity - 00.0% to 99.9%

**Resolution:**

Temperature - 0.1°C

Humidity - 0.1%

**Accuracy :**

Temperature -  $\pm 0.3^\circ\text{C}$

Humidity -  $\pm 3\%$  RH

**Sensor:**

IC based Temperature Humidity Sensor

**Display:**

2.3" Seven Segment Display

**Interface:**

RS-485

**Software:**

Provided with Unit

**Alarm Function:**

Alerts for high or low temperature/humidity thresholds

**Mounting:**

Wall Mount and Hanging Mount

#### CONTACT US

Mob: +91 9149169401

Email: badyalelectronics@gmail.com

#### ADDRESS

794/1, Adarsh Nagar

Roorkee-247667

Uttarakhand, India

#### GET CONNECT

Website: badyalelectronics.com

# PRODUCT DATA SHEET

## 15 INPUT AND 15 OUTPUT DIGITAL INTERFACE MODULE

### PRODUCT INFORMATION

**MODEL: DIDO-01**

- > Rs232 Interface
- > Panel Mount
- > Wide Voltage Range (DC 7~36V)
- >500mA Current Sink



Digital Input & Output Module offers robust and versatile digital signal processing capabilities for industrial applications. With support for a wide voltage power supply range of DC 7 to 36V, it ensures compatibility with various power sources commonly found in industrial environments. It offers 15 Input CH for interfacing with external sensors. 15 output CH utilizes Darlington transistors, provides stronger driving capability with up to 500mA sinking current, built-in flyback diode protection

### PRODUCT SPECIFICATION

<b>Input Voltage</b>	- 7V to 36V
<b>Communication Mode</b>	- Rs232
<b>Baud Rate (bps)</b>	- 9600
<b>Input</b>	- CH-15
<b>Input Voltage Range</b>	- 7 to 37V
<b>Output Type</b>	- Open-Drain
<b>Max. Output Load</b>	- 500mA
<b>Flyback Diode</b>	- Provided

#### CONTACT US

Mob: +91 9149169401  
Email: badyalelectronics@gmail.com

#### ADDRESS

794/1, Adarsh Nagar  
Roorkee-247667  
Uttarakhand, India

#### GET CONNECT

Website: badyalelectronics.com

**PRODUCT INFORMATION****MODEL: BET1450-B40**↓  
No. of Channels  
(01-40)

- > High stabilized amplifier
- > High Performance ADC
- > User Friendly Keyboard



A Temperature data logger is a device designed to measure and record temperature readings over a specific period of time. These loggers are commonly used in various industries and applications where monitoring and recording of temperature changes are critical. It can measure up to 40 channels and display recorded data on LCD. 4\*6 matrix Keypad is provided which make it easy to operate by user. The built-in real-time clock is provided to put the time stamp on the measured data. RS-232C link/USB is provided to transfer data to PC.

**PRODUCT SPECIFICATION****Range:** -200°C to 1450°C (As per Sensor)**Resolution:** 1°C**Accuracy :** ±1°C**Sensor:**j, k, t type Thermocouple or Pt100  
(To be specified with the order)**Scan rate:**

Up to 8 Channel /Sec

**Internal Storage:**

1000 Samples

**Channels:**

As per Model Number

**Memory:**

Internal non-volatile

**Display:**

20X4 Intelligent LCD Display

**Computer Interface:**

RS-232-C interface/USB Optional

**Software:**

Provided with Unit

**Power Supply:**

200 to 250VAC ± 10%, 50 Hz

**CONTACT US**

Mob: +91 9149169401

Email: badyalelectronics@gmail.com

**ADDRESS**

794/1, Adarsh Nagar

Roorkee-247667

Uttarakhand, India

**GET CONNECT**

Website: badyalelectronics.com

**PRODUCT INFORMATION****MODEL: BET400-U40**↓  
No. of Channels  
(01-40)

- > High stabilized amplifier
- > High Performance ADC
- > User Friendly Keyboard



A Temperature data logger is a device designed to measure and record temperature readings over a specific period of time. These loggers are commonly used in various industries and applications where monitoring and recording of temperature changes are critical. It can measure up to 40 channels and display recorded data on LCD. 4\*6 matrix Keypad is provided which make it easy to operate by user. The built-in real-time clock is provided to put the time stamp on the measured data. RS-232C link/USB is provided to transfer data to PC.

**PRODUCT SPECIFICATION****Range:** 0°C to 400.0°C (As per Sensor)**Resolution:** 0.1°C**Accuracy :** ±0.2°C**Sensor:**j, k, t type Thermocouple or Pt100  
(To be specified with the order)**Scan rate:**

Up to 8 Channel /Sec

**Internal Storage:**

1000 Samples

**Channels:**

As per Model Number

**Memory:**

Internal non-volatile

**Display:**

20X4 Intelligent LCD Display

**Computer Interface:**

RS-232 Interface/USB Optional

**Software:**

Provided with Unit

**Power Supply:**

200 to 250VAC ± 10%, 50 Hz

**CONTACT US**

Mob: +91 9149169401

Email: badyalelectronics@gmail.com

**ADDRESS**

794/1, Adarsh Nagar

Roorkee-247667

Uttarakhand, India

**GET CONNECT**

Website: badyalelectronics.com

**PRODUCT INFORMATION****MODEL: BET200-B40**No. of Channels  
(01-40)

- > High stabilized amplifier
- > High Performance ADC
- > User Friendly Keyboard



A Temperature data logger is a device designed to measure and record temperature readings over a specific period of time. These loggers are commonly used in various industries and applications where monitoring and recording of temperature changes are critical. It can measure up to 40 channels and display recorded data on LCD. 4\*6 matrix Keypad is provided which make it easy to operate by user. The built-in real-time clock is provided to put the time stamp on the measured data. RS-232C link/USB is provided to transfer data to PC.

**PRODUCT SPECIFICATION****Range:** -200°C to 200.0°C (As per Sensor)**Resolution:** 0.1°C**Accuracy :** ±0.2°C**Sensor:**

j, k, t type Thermocouple or Pt100

(To be specified with the order)

**Scan rate:**

Up to 8 Channel /Sec

**Internal Storage:**

1000 Samples

**Channels:**

As per Model Number

**Memory:**

Internal non-volatile

**Display:**

20X4 Intelligent LCD Display

**Computer Interface:**

RS-232 Interface/USB Optional

**Software:**

Provided with Unit

**Power Supply:**

200 to 250VAC ± 10%, 50 Hz

**CONTACT US**

Mob: +91 9149169401

Email: badyalelectronics@gmail.com

**ADDRESS**

794/1, Adarsh Nagar

Roorkee-247667

Uttarakhand, India

**GET CONNECT**

Website: badyalelectronics.com




# PRODUCT

## DATA SHEET

### PRESSURE DATA LOGGER

#### PRODUCT INFORMATION

**MODEL: BEP40-U40**

No. of Channels  
(01-40)

- > High stabilized amplifier
- > High Performance ADC
- > User Friendly Keyboard



A pressure data logger is a device designed to measure and record pressure readings over a specific period of time. These loggers are commonly used in various industries and applications where monitoring and recording pressure changes are critical. It can measure up to 40 channels and display recorded data on LCD. 4\*6 matrix Keypad is provided which make it easy to operate by user. The built-in real-time clock is provided to put the time stamp on the measured data. RS-232C link/USB is provided to transfer data to PC.

#### PRODUCT SPECIFICATION

**Range:**

Pressure - 0 to 40.00 Bar (As per Sensor)

**Resolution:**

Pressure - 0.01Bar

**Accuracy :**Pressure -  $\pm 0.1\% \pm 1$  Digit**Sensor:**

4-20mA Pressure sensors

**Scan rate:**

Up to 8 Channel /Sec

**Channels:**

As per Model Number

**Memory:**

Internal non-volatile

**Display:**

20X4 Intelligent LCD Display

**Computer Interface:**

RS-232-C interface/USB Optional

**Software:**

Provided with Unit

**Power Supply:**200 to 250VAC  $\pm 10\%$ , 50 Hz**CONTACT US**Mob: +91 9149169401  
Email: badyalelectronics@gmail.com**ADDRESS**794/1, Adarsh Nagar  
Roorkee-247667  
Uttarakhand, India**GET CONNECT**

Website: badyalelectronics.com

**PRODUCT INFORMATION****MODEL: DL-MS-Cxx**└── (01-40)  
    No. of Channels

- > High stabilized amplifier
- > High Performance ADC
- > User Friendly Keyboard



A Multi Sensor data logger is a device designed to measure and record sensors readings over a specific period of time. These loggers are commonly used in various industries and applications where monitoring and recording of parameters changes are critical. It can measure up to 40 channels and display recorded data on LCD. 4\*6 matrix Keypad is provided which make it easy to operate by user. The built-in real-time clock is provided to put the time stamp on the measured data. RS-232C link/USB is provided to transfer data to PC.

**PRODUCT SPECIFICATION****Range**

Temperature: 0°C to 1450°C(As per Sensor)  
Pressure : 0 to 200.0Kg/cm<sup>2</sup> (As per Sensor)

**Resolution**

Temperature:1°C  
Pressure :0.1Kg/cm<sup>2</sup>

**Accuracy**

Temperature: ±1°C  
Pressure : ±1 Digit

**Sensor**

Temperature: k type Thermocouple  
Pressure: 4-20mA Pressure sensors

**Scan rate** : Up to 8 Channel /Sec

**Channels**

As per Model Number

**Memory**

Internal non-volatile

**Display**

20X4 Intelligent LCD Display

**Computer Interface**

RS-232-C interface/USB Optional

**Software**

Provided with Unit

**Power Supply**

200 to 250VAC ± 10%, 50 Hz

**CONTACT US**

Mob: +91 9149169401  
Email: badyalelectronics@gmail.com

**ADDRESS**

794/1, Adarsh Nagar  
Roorkee-247667  
Uttarakhand, India

**GET CONNECT**

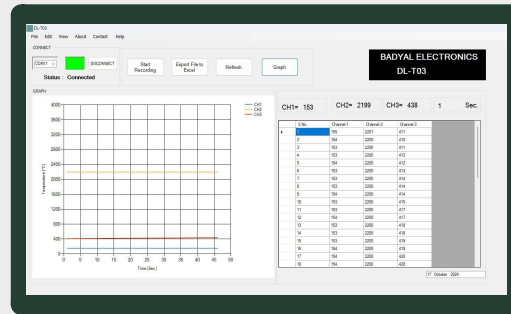
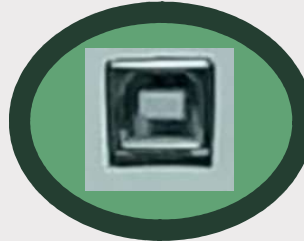
Website: badyalelectronics.com

#### PRODUCT INFORMATION

**MODEL: DL-T03**

MODEL NUMBER	NUMBER OF CHANNELS
DL-T01	1
DL-T02	2
DL-T04	4
DL-T08	8

- > High stabilized amplifier
- > High Performance ADC
- > Easy to operate



A Temperature data logger is a device designed to measure and record temperature readings over a specific period of time. These loggers are commonly used in various industries and applications where monitoring and recording of temperature changes are critical. It can measure up to 8 channels. RS-232C link/RS-485/USB Optional is provided to transfer data to PC.

#### PRODUCT SPECIFICATION

**Range:** 0°C to 1450°C(As per Sensor)  
**Resolution:** 1°C  
**Accuracy :** ±1°C  
**Sensor:**  
 j, k, t type Thermocouple or Pt100  
 (To be specified with the order)  
**Scan rate:**  
 Up to 30 Sample /Sec

**Channels:**  
 As per Model Number  
**Memory:**  
 Internal non-volatile  
**Computer Interface:**  
 RS-232-C interface/USB/RS-485 Optional  
**Software:**  
 Provided with Unit  
**USB Isolation:**  
 Provided

#### CONTACT US

Mob: +91 9149169401  
 Email: badyalelectronics@gmail.com

#### ADDRESS

794/1, Adarsh Nagar  
 Roorkee-247667  
 Uttarakhand, India

#### GET CONNECT

Website: badyalelectronics.com